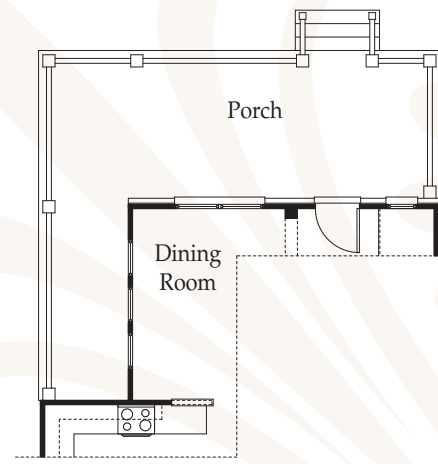
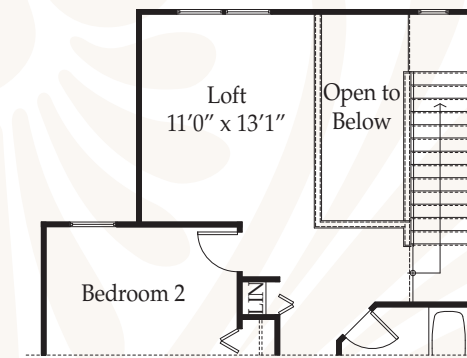


# The Georgetown

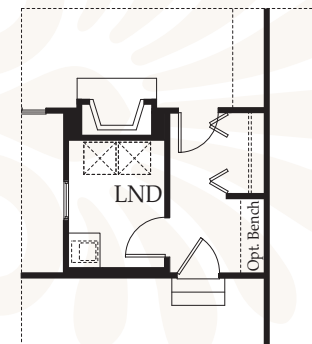
West Point Possibilities



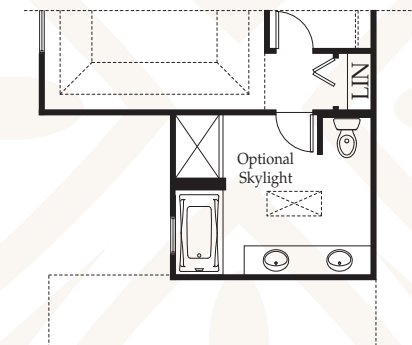
First Floor Plan  
Elevation B & C



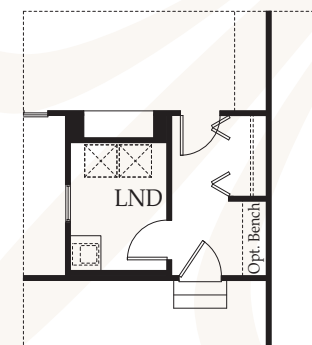
Optional Loft



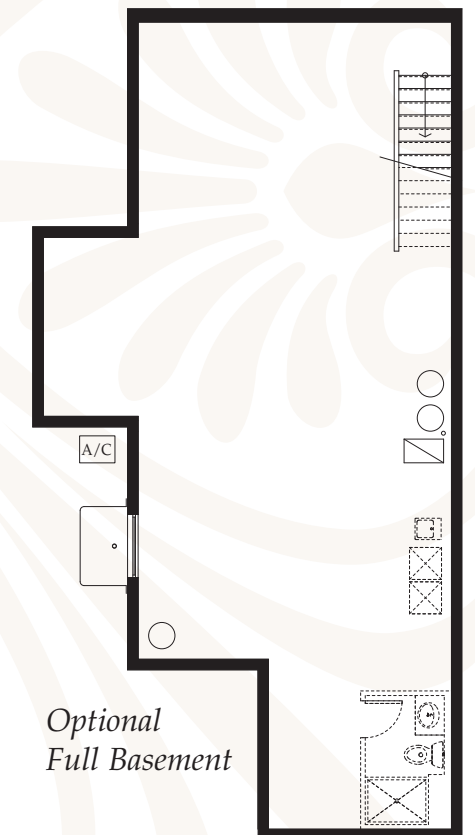
Optional Fireplace  
Optional Media Center



Optional Deluxe Master Bath



Optional Media Center



Optional  
Full Basement

elevation A



elevation B



elevation C



*This three bedroom model has all the space and amenities buyers have come to expect from West Point Builders plus a free flowing floor plan that is designed for the way people really live and entertain today. A serving/breakfast bar defines the space between the spacious kitchen and Great Room where you have a choice of upgrading with either a fireplace or media center. Your private garden is also on display year round just outside this room. This home also features a formal dining room where family members can reconnect on holidays and other special occasions. The master bedroom suite features his and hers walk-in closets, linen closet and bath with double bowl vanity.*

## The Georgetown

2,034 sq.ft.  
3 bedrooms ~ 2-1/2 baths  
attached 2-3 car garage  
private garden



The HERITAGE Single-Family Homes Series